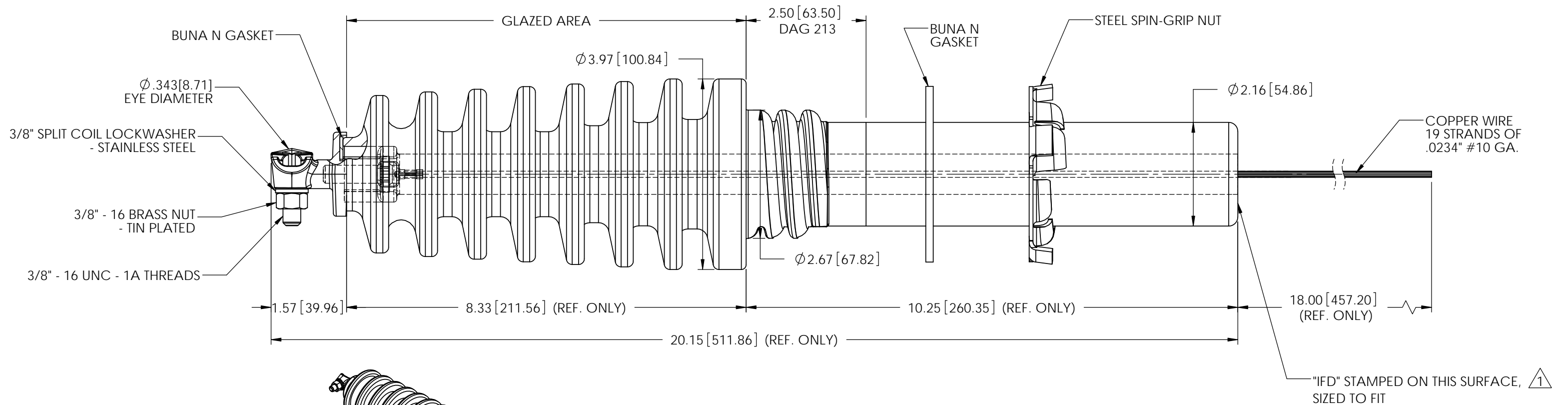
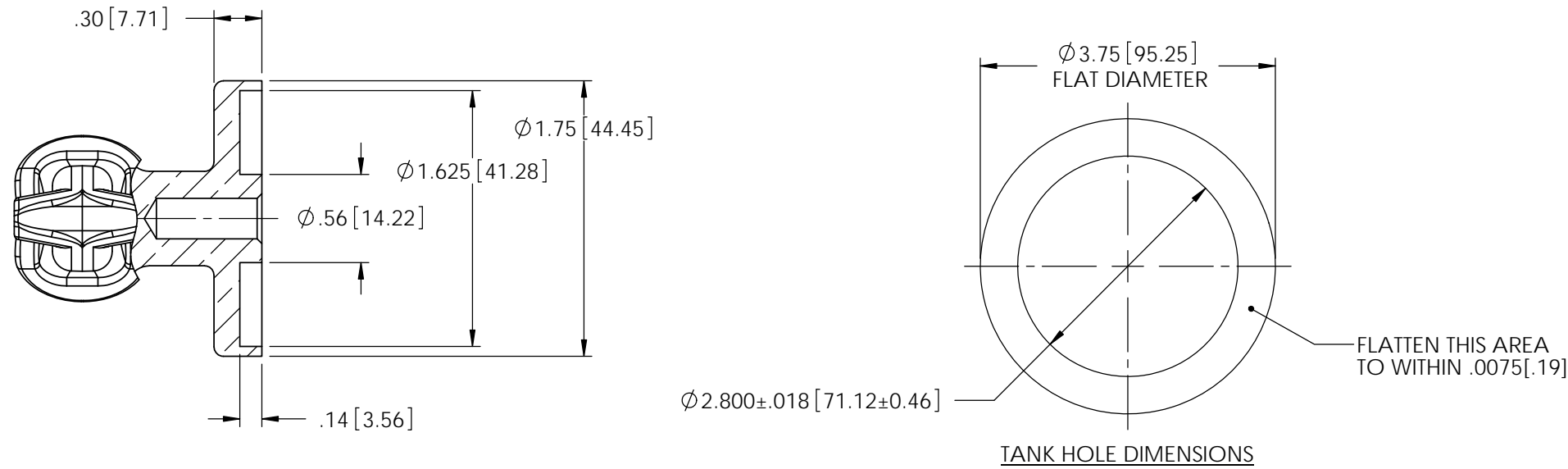


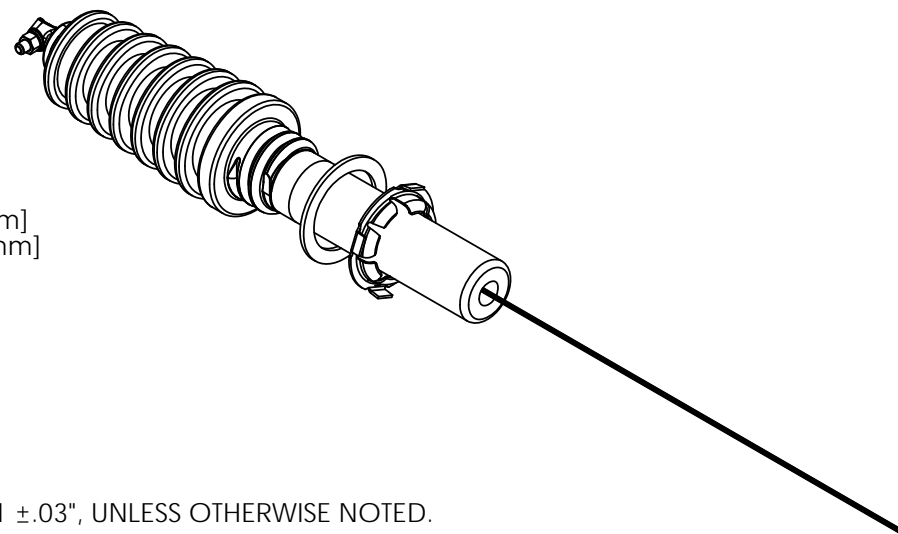
REVISIONS					
REV.	DATE	ECN #	DESCRIPTION	BY	APPROVED
1	3/2/2021	HJ21-036	ADDED "IFD" STAMP	MAD	BG



- SPECIFICATIONS:**
1. RATED VOLTAGE.....18kV
 2. BASIC IMPULSE LEVEL.....125kV
 3. STRIKE DISTANCE.....8.75" [222.25mm]
 4. CREEP DISTANCE.....17.75" [450.85mm]
 5. APPROXIMATE WEIGHT.....7.5 LBS

- MATERIAL:**
1. CAP - C84400 TIN PLATED
 2. EYEBOLT - C95500 TIN PLATED

- PORCELAIN NOTES:**
1. WET PROCESS ELECTRICAL PORCELAIN.
 2. GRAY GLAZE MUNSELL 5BG 7.0/0.4
 3. TOLERANCE ±3% WITH NOTHING LESS THAN ±.03", UNLESS OTHERWISE NOTED.



PROPRIETARY AND CONFIDENTIAL
 THE INFORMATION CONTAINED IN THIS DRAWING IS THE SOLE PROPERTY OF H-J ENTERPRISES, INC. ANY REPRODUCTION IN PART OR AS A WHOLE WITHOUT THE WRITTEN PERMISSION OF H-J ENTERPRISES, INC. IS PROHIBITED.

TOLERANCES (EXCEPT AS NOTED)	
DECIMAL	+/- .032"/.8mm
FRACTIONAL	+/-
ANGULAR	+/- 2 Degrees



H - J ENTERPRISES, INC.		
3010 HIGH RIDGE BLVD. HIGH RIDGE, MO. 63049 USA PHONE 1-636-677-3421 FAX 1-636-376-1915		
18kV - 125kV BIL H.V. BUSHING ASSEMBLY		
MATERIAL (SEE DRAWING)		
CHK'D	APP'D	DRAWING NO.
		AS1609-003
DRAWN BY	DATE	SCALE
JH	12/22/2010	N.T.S.